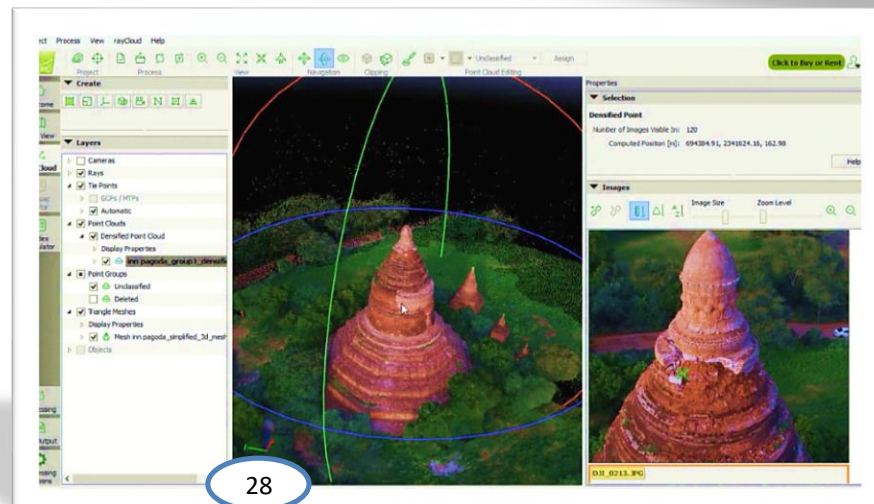
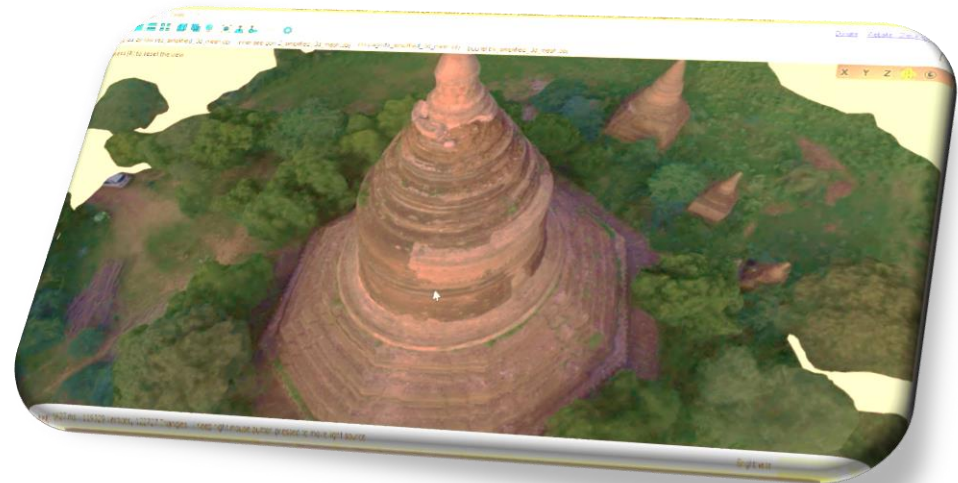




Project 1. 3D Modeling for Bagan Monuments and Temples using MAEU- Multicopters

3D modeling of Bagan Innpaya Pagoda

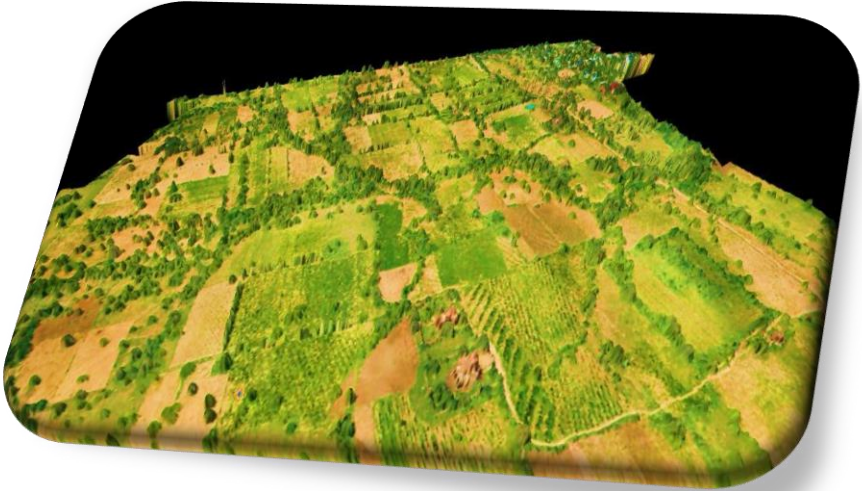




Successfully Finished 42 Monuments/Temples 3D modeling

- ❖ Sulamani Temple
- ❖ Saydanargyi Pagoda
- ❖ Gubyaukgyi Temple
- ❖ Bulelthi Pagoda
- ❖ Tayokepyay Temple
- ❖ Ywarhaunggyi Temple
- ❖ Inner Zigon Pagoda
- ❖ Shwegugyi Temple
- ❖ Mahabodhi Temple
- ❖ Dhammayangyi Temple
- ❖ Innpaya Pagoda
- ❖ Gawdawpalin Temple
- ❖ Mingalazedi Pagoda
- ❖ Shwesandaw Pagoda
- ❖ Seinnyet sister Temples
- ❖ Anoutbatlate Temple
- ❖ Ashaebatlade Temple
- ❖ Apalyadanar Temple
- ❖ Mingalazedi Pagoda
- ❖ Shwesandaw Pagoda
- ❖ Seinnyet sister Temples
- ❖ Anoutbatlate Temple
- ❖ Ashaebatlade Temple
- ❖ Apalyadanar Temple
- ❖ Pahtothamyia Temple
- ❖ Bupaya Pagoda
- ❖ Dhammayazika Pagoda
- ❖ Thambula Temple
- ❖ Lawkahtatepan
- ❖ Minyeingon Temple
- ❖ Thatbyinnyu Temple
- ❖ Nagayone Temple
- ❖ Shiniszagawna Temple
- ❖ Gubyaukngye Temple
- ❖ Nwarpyagu Temple
- ❖ Ananda Oakkyaung
- ❖ Pagoda No.2095
- ❖ Thitsawadi Temple
- ❖ Pyatthatgyi Temple
- ❖ Nathlaungkyaung Temple
- ❖ Thabatemout
- ❖ Tha kya muu nii
- ❖ Myay pone thar
- ❖ Law ka U shang
- ❖ Paine Nae See
- ❖ Myin Ka Bar Gu Pyauk Gyi
- ❖ Sin Myar Shin
- ❖ Myaut ta Wat

Project 2. Aerial Survey Mapping for Bagan Region Using MAEU - UAVs





Handover Successfully Bagan Project, Awards of Honor by Vice President

(1)

ဒု-သမ္မတ (၁) ထံသို့ ပုဂံရွေးတောင်းဒေသ အတွက် 3D Modeling Tempels နှင့် ဧက ၁၂၀၀၀ ခြံအသုံးချမြေပုံများ လုပ်ငန်းပြီးစီးမှုလွှဲပြောင်းပေးအပ်ခြင်းနှင့် ဂုဏ်ပြုမှတ်တမ်းပေးအပ်ခြင်း





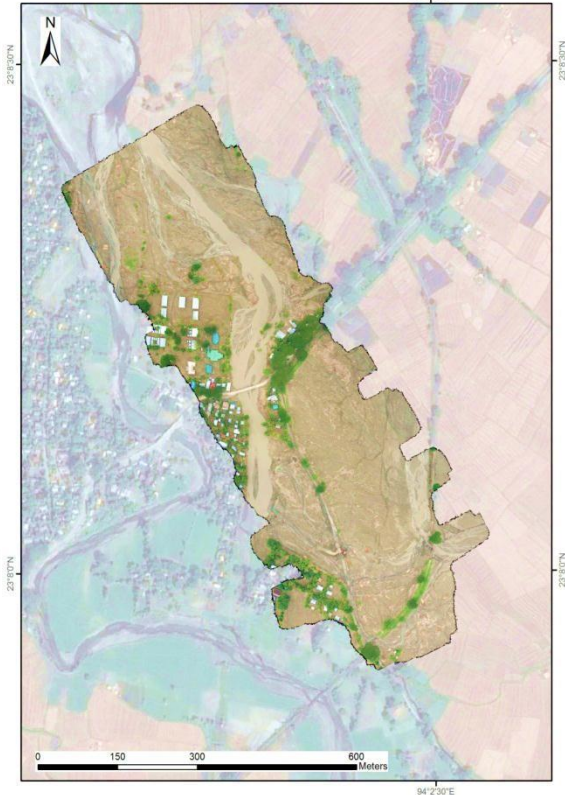
2015 Flooded Kale region, Our UAVs/Drone produced the Aerial Survey map included livelihood, Agriculture, and Damage assessment ,etc. Supporting for Department of Disaster Management (DDM)



Satellite Map



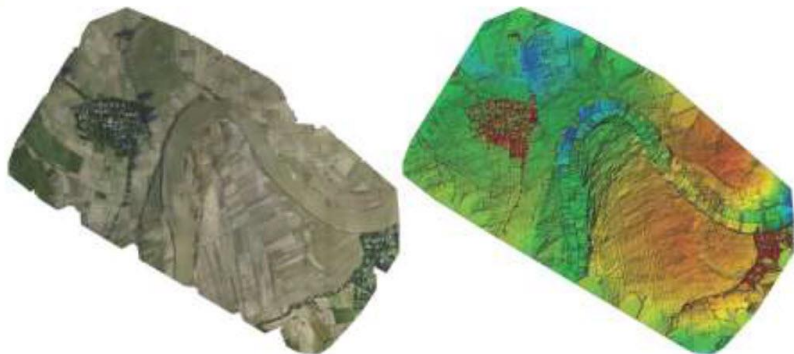
MAEU UAV Map



River changes after disaster in Kale region

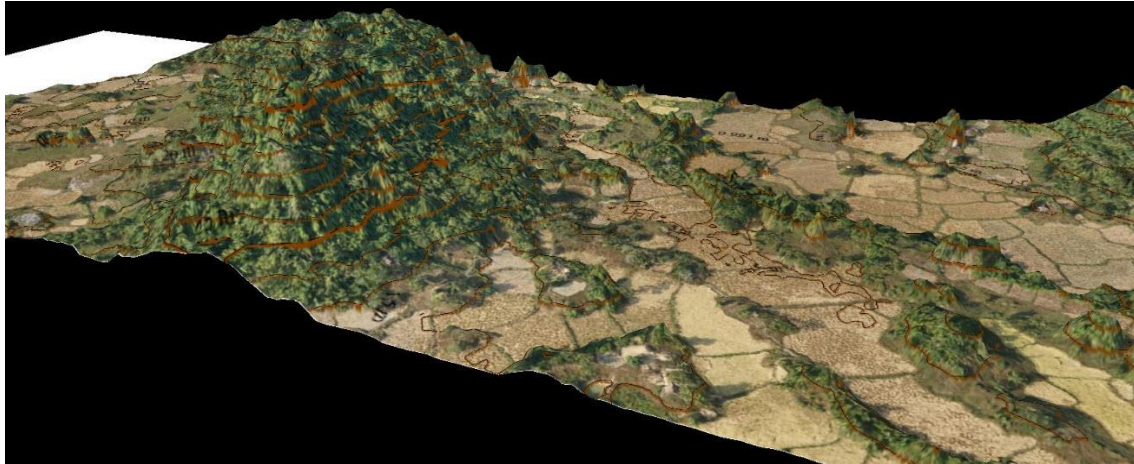


**Co-operated with Food and Agriculture Organization of the United nations (UN FAO)
for
Emergency Food/Cash Assistance and Immediate Agriculture Livelihood
Assistance to Flood Affected People at **Magway Regions** in 2016.**

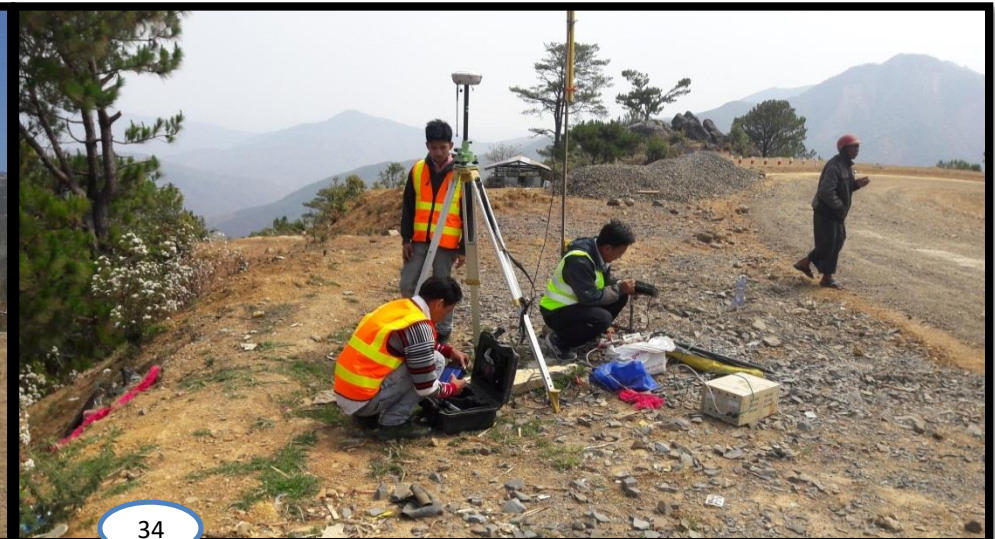




Co-operated with Food and Agriculture Organization of the United nations (UN FAO) for Emergency Food/Cash Assistance and Immediate Agriculture Livelihood Assistance to Landslide Affected People at **Chin state Regions in 2017.**



UNFAO cooperated with MAEU UAV/Drone Research Dept to support applied Aerial survey Map for Emergency Food/Cash Assistance and Immediate Agriculture Livelihood , damage assessment and disaster management at Landslide region. Also Our Dept; can support Agricultural Drone Training for Ministry of Agriculture organized by UNFAO.





သဘာဝဘေးအန္တရာယ်ကြောင့် စိုက်ပျိုးရေးလုပ်ငန်းများ ဆုံးရှုံးမှုလျော့ပါးရေးနှင့် စိုက်ပျိုးရေးလုပ်ငန်းများတွင်
မောင်းသူမဲ့လေယာဉ်ဖြင့်ကောင်းကင်ဓါတ်ပုံရိုက် အသုံးချမြေပုံထုတ်လုပ်ခြင်းသင်တန်း

Collaborated with UN FAO and Ministry of Agriculture, livestock and Irrigation

Training on Drone Mapping Operations and Scientific Application for DRR in Agriculture, livestock and Irrigation.

1. Fixedwing and Mulicopter Pilot Training for 30 officers from Ministry of Agriculture, livestock and Irrigation
2. Training for Map data processing
3. Training for Agriculture Crop Analysis data Map processing with Near Infrared Camera





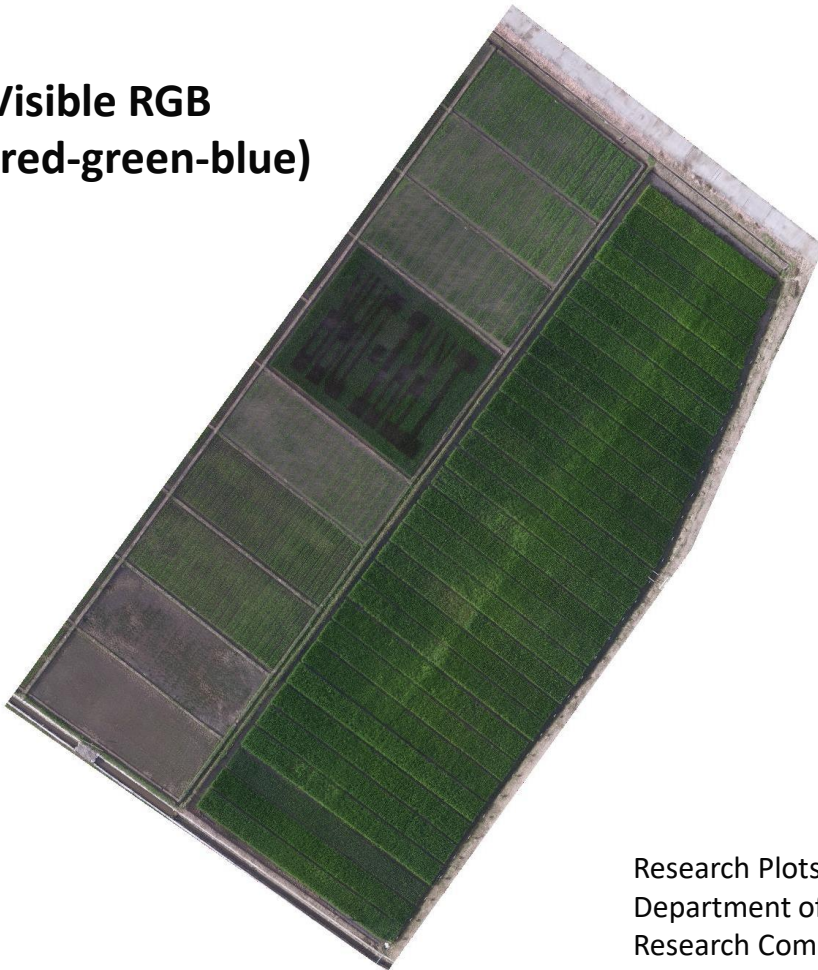
Collaborated with UN FAO and Ministry of Agriculture, livestock and Irrigation

Training on Drone Mapping Operations and Scientific Application for DRR Agriculture

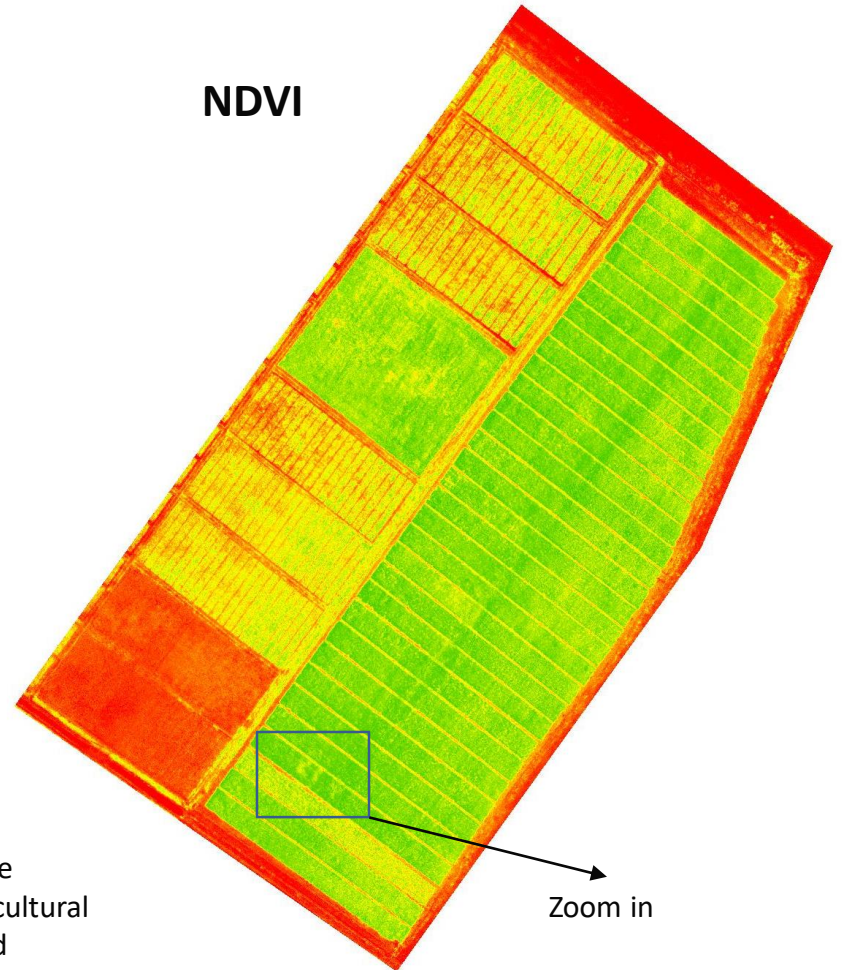


Use of NDVI to Support Crop Health Monitoring, Crop Research and Production

Visible RGB
(red-green-blue)



NDVI



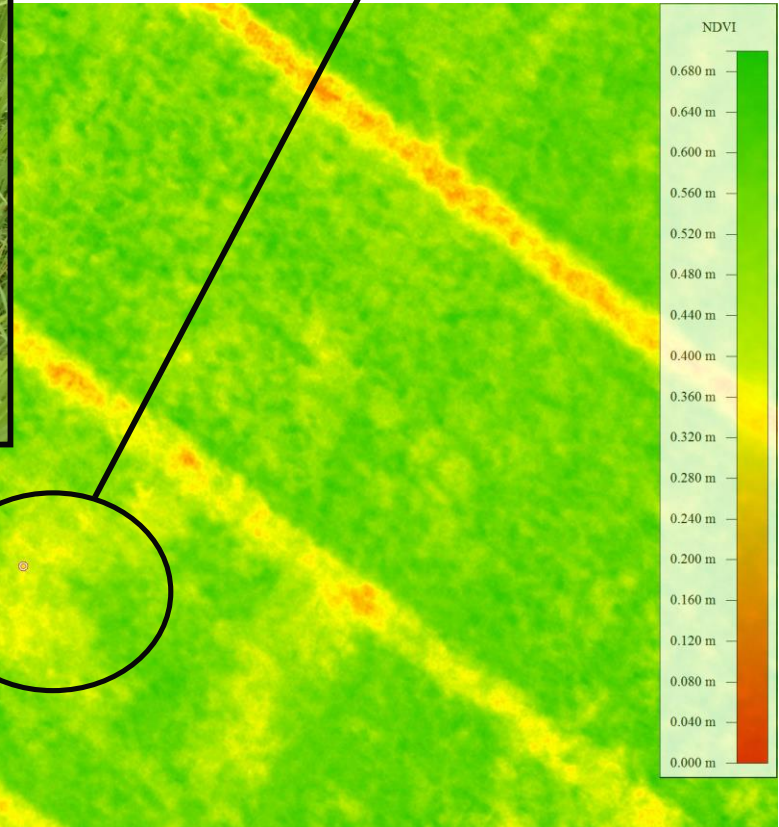
Research Plots at the
Department of Agricultural
Research Compound

Use of NDVI to Support Crop Health Monitoring, Crop Research and Production



**Stressed or Unhealthy Crop
(NDVI value 0.310 to 0.330)**

**Ground Investigation
and Validation
of Stressed Crop**





လူမှုဝန်ထမ်း ကယ်ဆယ်ရေးနှင့်ပြန်လည်နေရာချထားဝန်ကြီးဌာန ၊ အရေးပေါ်
 ကယ်ဆယ်ရေးနှင့်ပြန်လည်နေရာချထားရေးဝန်ကြီးဌာန ၏ အကူအညီတောင်းခံမှုဖြင့်

- မကွေးတိုင်းဒေသကြီး၊ ပခုက္ကူမြို့နယ်နှင့်မင်းဘူးမြို့နယ်တို့တွင် မောင်းသူမဲ့လေယာဉ်များအသုံးချ၍
 ကယ်ဆယ်ရေး၊ ရေကြီးမှုအခြေအနေစောင့်ကြည့်ရေးနှင့်အသုံးချမြေပုံထုတ်ခြင်းများဆောင်ရွက်ပေးခဲ့ပါသည်။

Co-operated with [Ministry of Social Welfare, Relief and Resettlement](#) and UN FAO for Emergency Response and damage control assistant using Drone Technologies for MAGWAY Division Flooded



Minister of [Social Welfare, Relief and Resettlement](#)
 Checking our Drone Team @ MAGWAY Flooded region



Drone Pilot & GIS Mapping Training for Emergency Operation Center , Ministry of Social Welfare, Relief and Resettlement

Cooperated with UNFAO





“Drone Mapping of FishAdapt Project Sites in Yangon Region, Ayeyarwaddy Region and Rakhine State”

Supported Department of Fisheries of the Ministry of Agriculture, Livestock and Irrigation(MoALI) Cooperated UN FAO

To enable inland and costal fishery and aquaculture stakeholders to adapt to climate change by understanding and reducing vulnerabilities, and applying by the drone technology and GIS mapping using drone aerial photo and satellite map in real field.



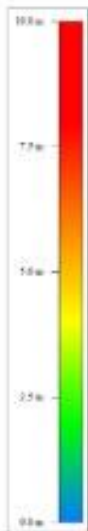
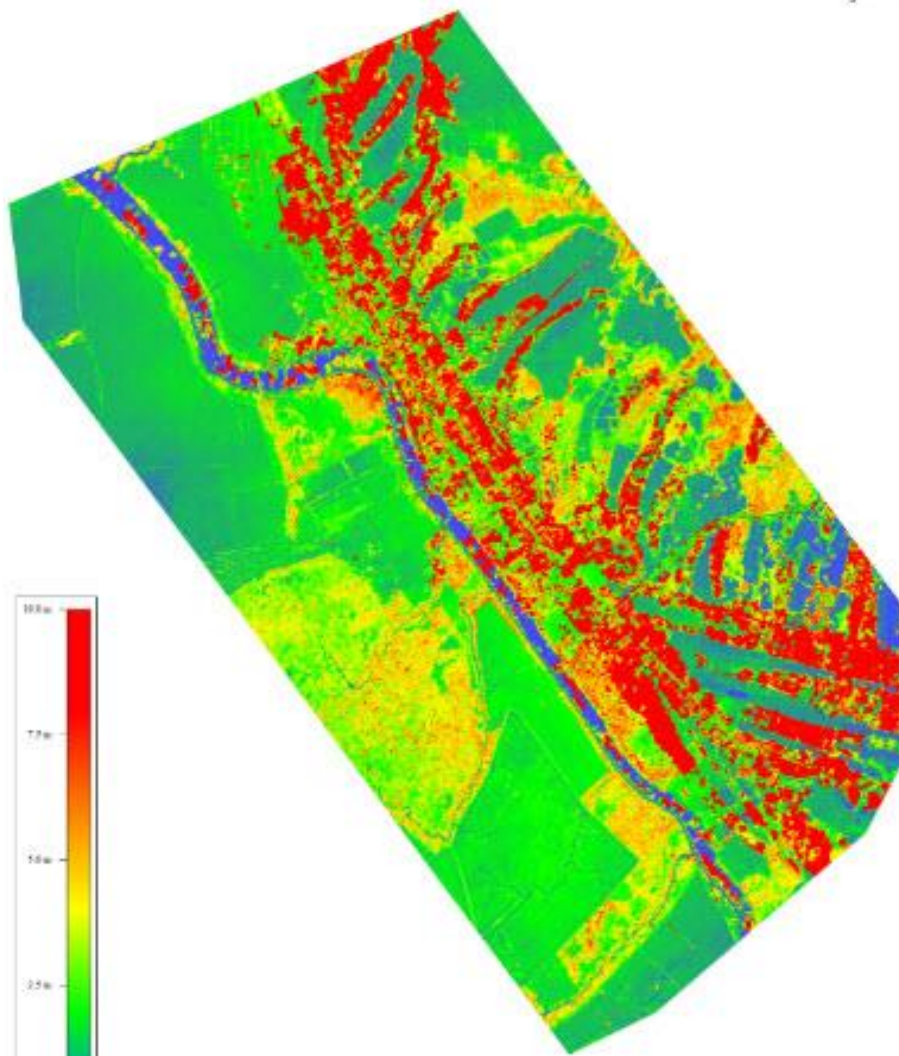
Digital Elevation Models of Ahmar Town

Pyapon Township, Ayeyarwaddy Region

Project Name: FishAdapt Project

UAV Map Date: 11.02.2019

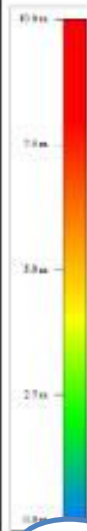
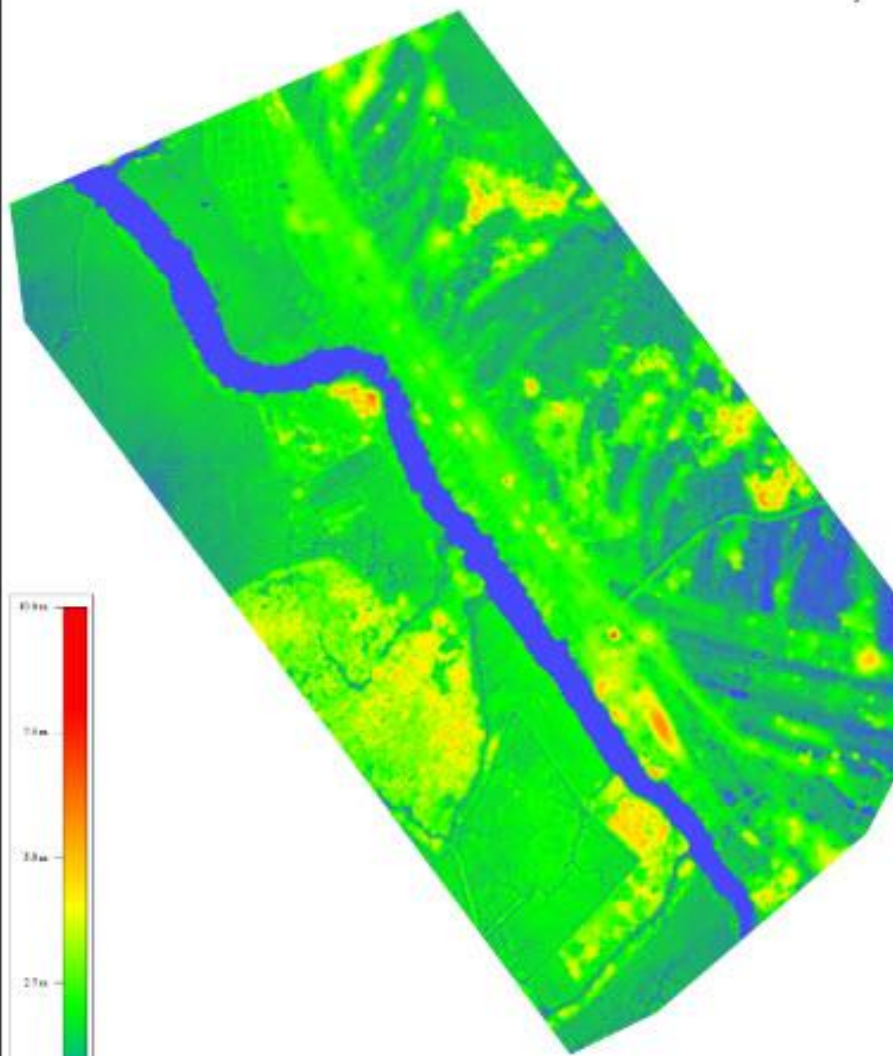
Digital Surface Model (DSM)



0 250 500 1,000
Meters
1 cm = 45 meters



Digital Terrain Model (DTM)



0 250 500 1,000
Meters
1 cm = 45 meters

