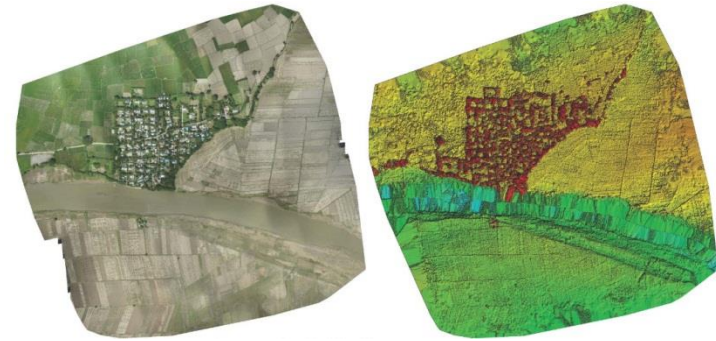




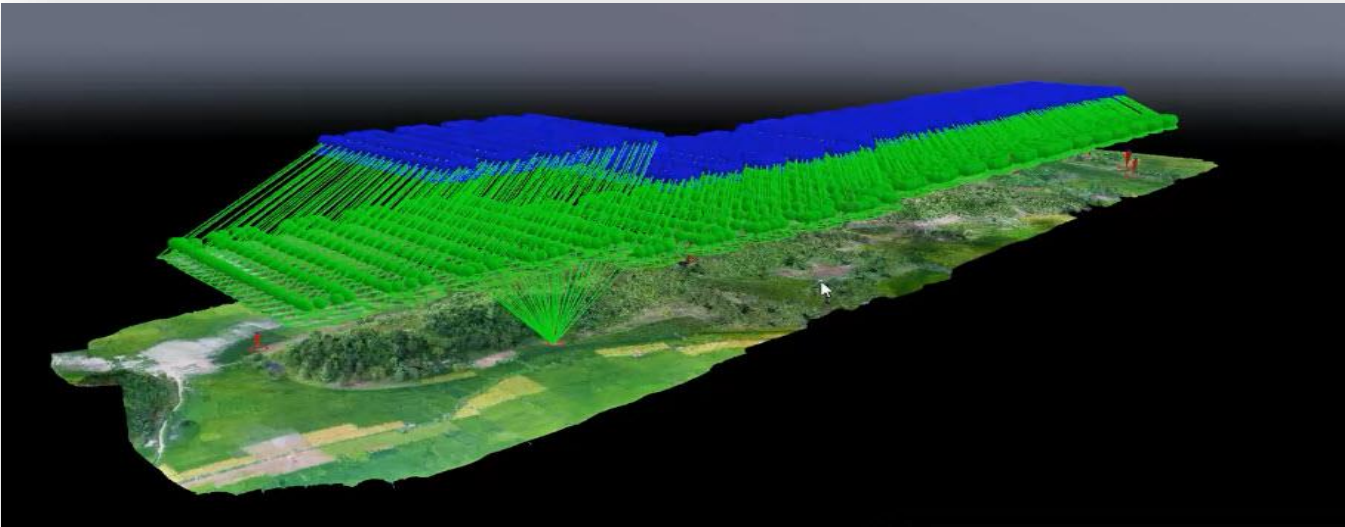
**Supporting Department of Agriculture for Drone Sparing & Monitoring Aerial Survey for Fall Armyworm decease in Nga Zun Township ,Irrawaddy**  
**Co-operated with Myamna AwBa Group**



# Supporting to Map Production Engineering Unit, Naypyitaw

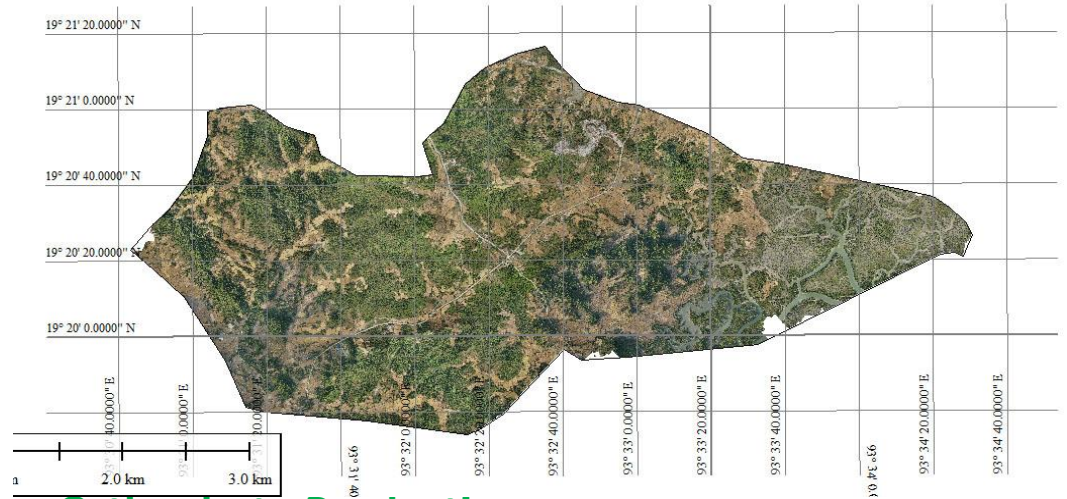
မြေပုံထုတ်လုပ်ရေးနှင့် စစ်ဆင်ရန်နည်းပညာရေးအဖွဲ့အစည်းတို့ကို ပံ့ပိုးဆောင်ရွက်မှု

- 1. Map production & Training
- 2. Research and Development for Mapping UAVs



# Landform Monitoring for Special Economic Zone (KyaukPhyu) in 2014 Dec (Environmental/Social Impact Assessment)

cooperated with Myanmar Survey Research (MSR) & Concordia International Co.,Ltd



**Orthophoto Production**

**3D modeling**

**Contouring**

**DEM extraction**

**Earth Work**

**(Cross section + Profile)**

**Camera Type** - Sony 24.3MP

**Ground Resolution** -7 cm

**Altitude (Meter)** -200m – 250m

**Overlap and side Lap** -80/ 75 %



**Supporting Mandalay City (48000 arcs / 20000 hectare) Development Committee for  
Aerial Mapping , Data Processing and Data Base Creating of Mandalay City  
Cooperated with Asia Air Survey Myanmar Co.,Ltd**

မြန်မာ့လေကြို စဉ်ပင်သာယာနယ်နိမိတ်ဧရိယာအား မောင်းသုမိုလေယာဉ်ဖြင့် ကောင်းကင်ခေါက်ပုံရိတ်  
Survey တိုင်းတာ အသုံးပြုရန်ထုတ်လုပ်ခြင်းလုပ်ငန်း

**MCDC MAPPING AREA  
ORTHOPHOTO**



Meeting Planning with Mayor of Mandalay City Development Committee

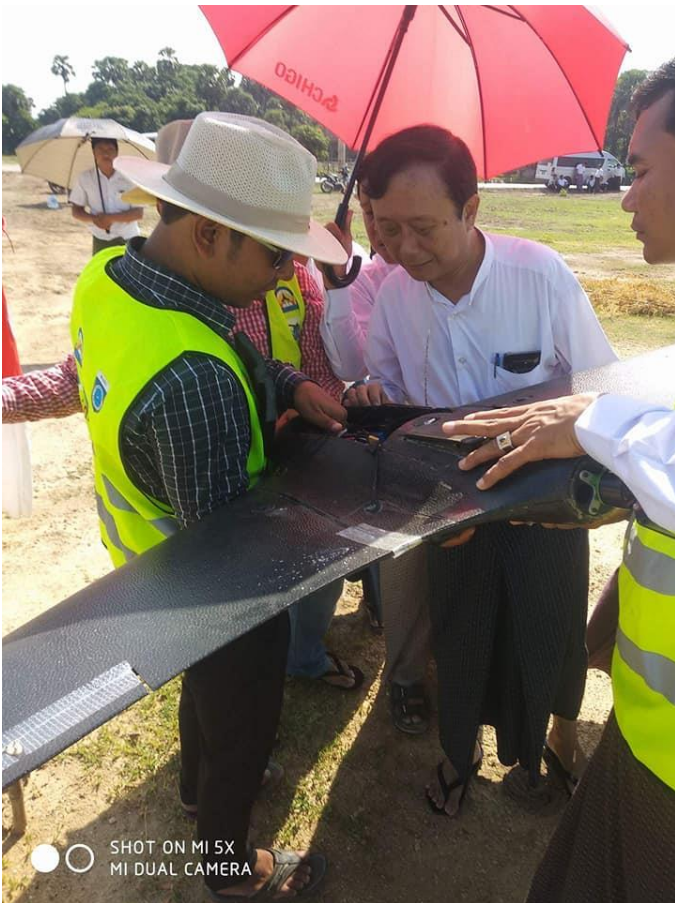
# Minister of Education Visited Project Implementation at MCDC, Mandalay





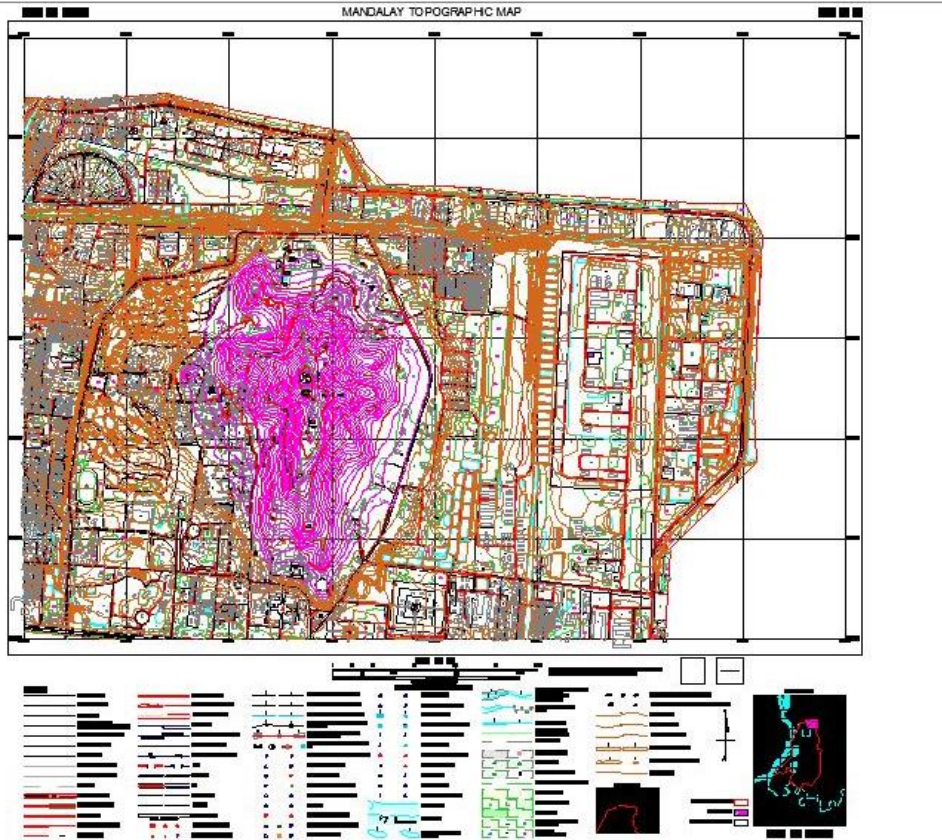
# UAV Aerial Photo Acquisition By UAV for Mandalay City (48000 area)

Mayor of Mandalay City Development Committee

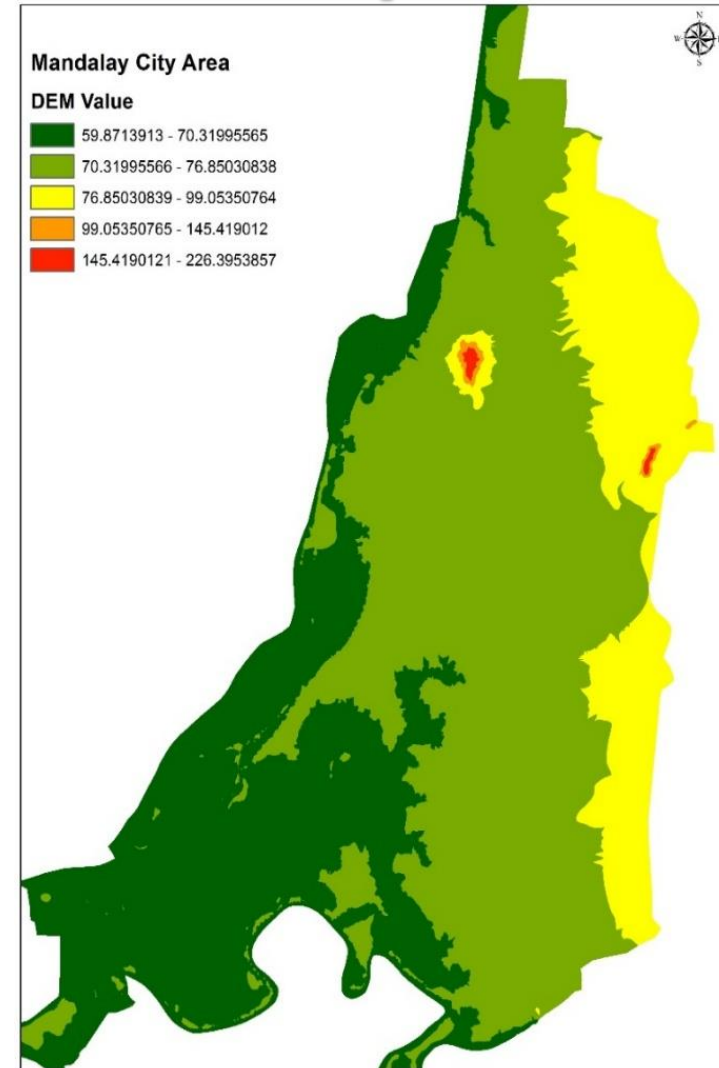


# Final Delivery Data Format

## 1:5000 Scale Any Topo Map (DWG Data)

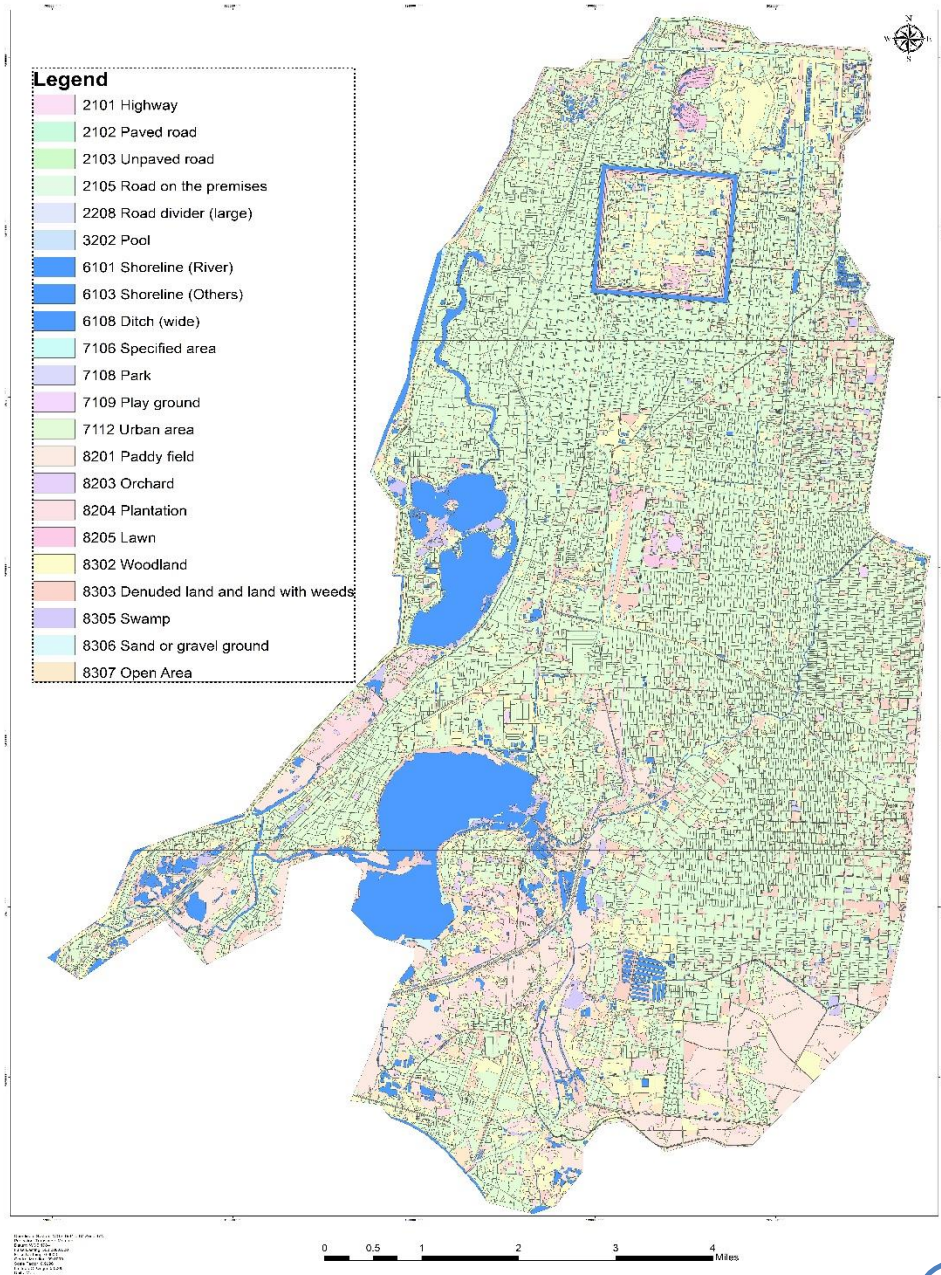


## DEM Map Photo



# Final digital data with Landuse Landcover Map

Mandalay City Landuse & Landcover Map



# Map Scale\_ 1;20000 Scale

## Using Layer Information







# Supporting Meikhtilar City Development Committee for Aerial Mapping , Data Processing and Data Base Creating of Mandalay City

မိတ္ထီလာမြို့စည်ပင်သာယာနယ်နိမိတ်စရိယာအား မောင်းသုံးလေယာဉ်ဖြင့် ကောင်းကင်ခေတ်ပုံရိုက် Survey တိုင်းတာ အသုံးချမြေပုံထုတ်လုပ်ခြင်းလုပ်ငန်း



# Supporting Wundwin City Development Committee for Aerial Mapping , Data Processing and Data Base Creating of Mandalay City



# Current Projects

- 3D Modelling & Hazard Map using Drones of KaungMu Taw Pagoda in Sagaing Township

Cooperated with Mandalay Technological University and Technological University (Sagaing)





Supporting

Department of Disaster Management, Ministry of Social Welfare, Relief and Resettlement and Cooperated with Department of Agriculture

# For Drone Aerial Topographic Map, Hazard Map & Flood Model of South NaWin Dam





## Proposed Projects

- Aerial Map Survey and Data Base Project in Pyinmana Township  
Cooperated with Pinmana Development Committee for
- Precision Agriculture Project Cooperated with Department of Agriculture Research (DAR)
- Developing agriculture section, we research and produce the spraying Drone and Crop monitoring Drones . Myanma Awba Gorup was trained spraying drone pilot and Crop health analysis Mapping used in Multispectral sensor  
Cooperated with Myanmar Awba group.

# Inventor Award (First Prize) International Technology & Industry Show 2017



# Thanks for your Attentions



**Department of UAV Research  
Myanmar Aerospace Engineering University**

**Email: [thaemaungec@gmail.com](mailto:thaemaungec@gmail.com)**

**Phone: +95 9972740074, 09258086060**

**Office : +95 64 35240**

**Fax : +95 -64 35245**

**<https://www.facebook.com/uavreserach.maeu>**

